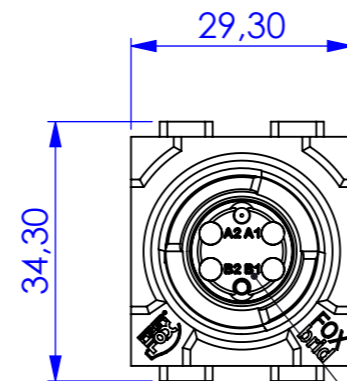
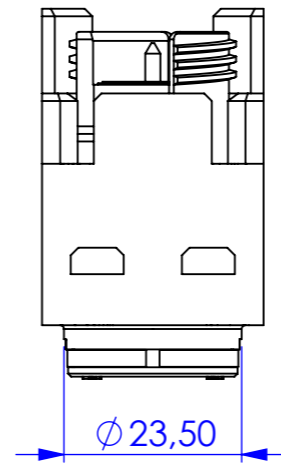
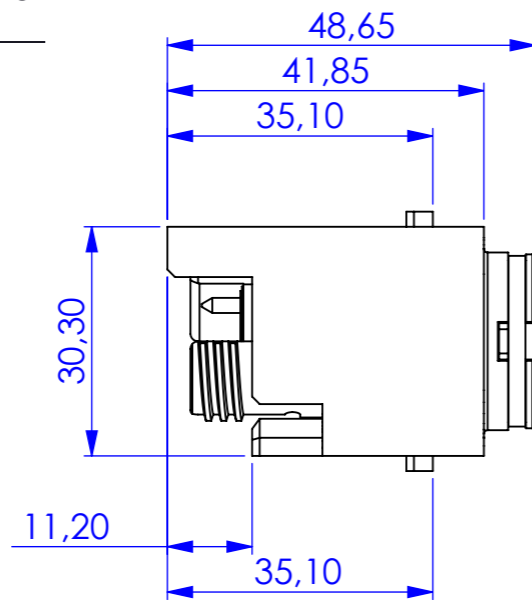
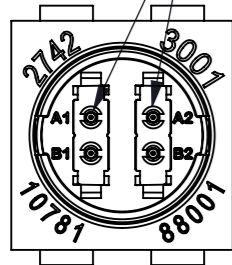
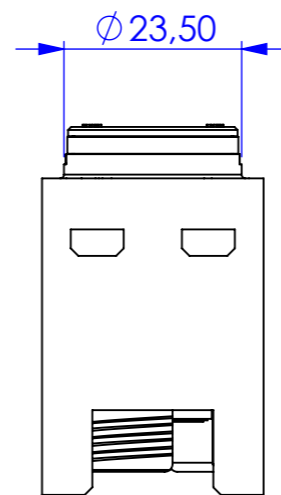
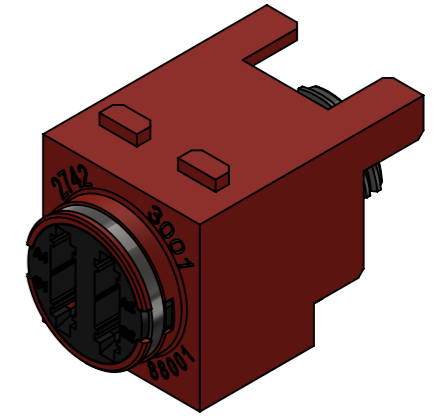
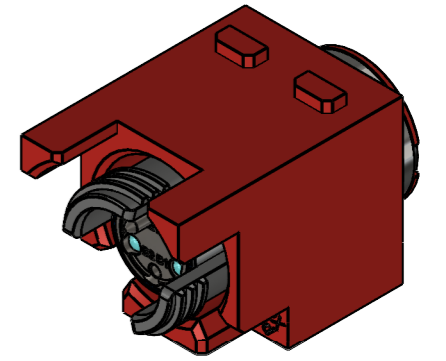
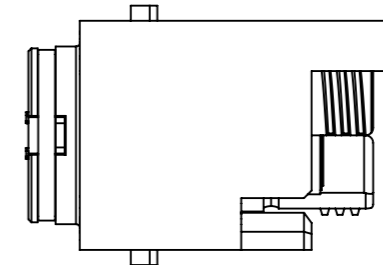


for 4x LC-Connector
MM 50/125

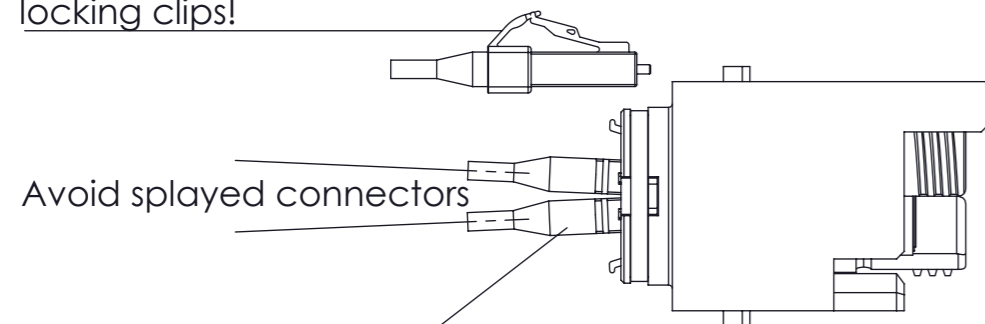


Expanded beam lens module



USE PROPERLY ALIGNED LC CONNECTORS ONLY

Before coupling, remove locking clips!



Avoid splayed connectors by using LCs without anti-slag collars and a boot diameter <5mm! (e.g. original FIBERFOX patch-cable)

- Plug-in compatible with FIBERFOX cable plugs

| | | | | | |
|---|-----------------|-------------------------|-------------------------|--------------------------|------------|
| Sheet Number 1/1 | Projection | Scale 1:1 | Format A3 | Tolerancing ISO 2768- | |
| g | cm ² | cm ³ | Created | HeBo | 28.05.2020 |
| Material | | | Modified | | |
| Material addition | | | Approved | DiRo | 28.05.2020 |
| Description FBM-1504MM50 Linienmodul 4ch MM 4xLC [F] 50/125µm OM4 | | | ECN Number | | |
| | | | Status | FOR FINAL | |
| | | 3D Model ID 27423001 | Document ID 27423001 | Revision | 01 |