



PRODUCT MANUAL

XLR Chassis Connector | B Series 5-Pole

1 Connector installation



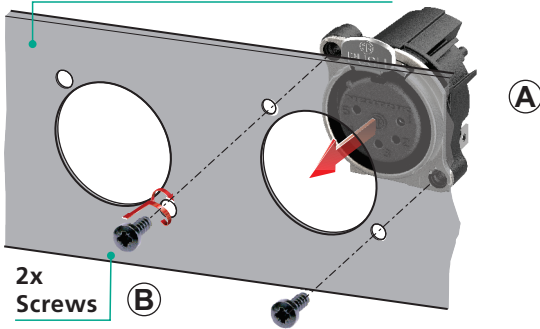
Example (NC5FBH1) of Delivery.

Panel thickness: 1.6 - 2.4 mm
[0.063 - 0.095"]

Panel thickness recommendation is based only on metal panels and may differ for other materials.

Equipment / Panel

Panel thickness: 1.6 - 2.4 mm [0.063 - 0.095"]



2x
Screws

Step 1: Assembly

- A Insert the receptacle from the back into the panel.
- B Position the screw and fasten it.
(Recommended screw look at Point 2. B)

NOTE: Before assembly, check that the sealing surface of the panel and the receptacle are clean.

Step 2: Fastening



C **ATTENTION:**
Tightening torque $M_A = 40 - 60 \text{ Ncm}$

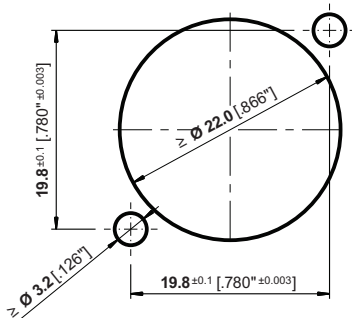


POZIDRIV® #1

2 Additional information

A Panel Cutout (Rear Side)

Rz ≤ 16



B Recommended screw

A-SCREW-1-8

Black self-tapping PLASTITE®* screw 2.9 x 1.05 triangle-shaped configuration, 8 mm long, panhead.





3 Application and Safety Instructions

A Assembly

- When assembling and processing the product, ensure the use of appropriate personal protective equipment.
- Neutrik components must only be assembled with designated and specified Neutrik components.
- Replacement parts are suitable only when used in combination with the designated components. The product's characteristics are guaranteed only in the intended combination.
- The male products are to be used exclusively as received connectors so that they touchabel male contacts are never under load when unplugged.
- The product may only be soldered by trained professionals.

B Application

- The product is exclusively intended for installation in electronic equipment or similar devices.
- The product is not intended for use in medical applications.
- The product is not intended for use in potentially explosive or flammable environments.
- The product is not intended for use as climbing aids. Attention electrical hazards.

C Operation

- Children must be supervised to ensure that they do not play with the product.
- Ensure that the contact surfaces are dry before plugging in.
- Product surfaces may cause burns at elevated ambient temperatures. Ensure the use of appropriate protective equipment.
- Neutrik products shall only be combined with products from Neutrik Group brands.
- Do not plug under load.

D Cleaning

- Clean only with dry and lint-free materials or compressed air.
- The product must not be cleaned while under load. The product may only be cleaned while it is not connected to any voltage and without the use of cleaning agents.

E Damages

- Handle products with care.
- In case of visible damages, check the suitability of the product for use.
- The product must be checked regularly for suitability.
- The local maintenance regulations must be followed.

F Storage

- The product must be stored in a dry and clean place at temperatures between -10 °C and $+35\text{ °C}$ at a maximum relative humidity of 60%.
- The product must be protected from temperature fluctuations.
- The product must be protected from excessive air pollution.
- The product must be protected from mechanical impact.

i More Information on the website

<https://www.neutrik.com/en/neutrik/products/xlr-connectors/xlr-chassis-connectors/b-series?c=audio>



Document No.: BDA 727 V1
Date: 2025-01-29

Neutrik AG | LI-9494 Schaan

www.neutrik.com

Data subject to change without prior notice. © 2025 NEUTRIK®. NEUTRIK® are registered trademark of Neutrik AG. ALL RIGHTS RESERVED.

NEUTRIK
A brand of the Neutrik Group